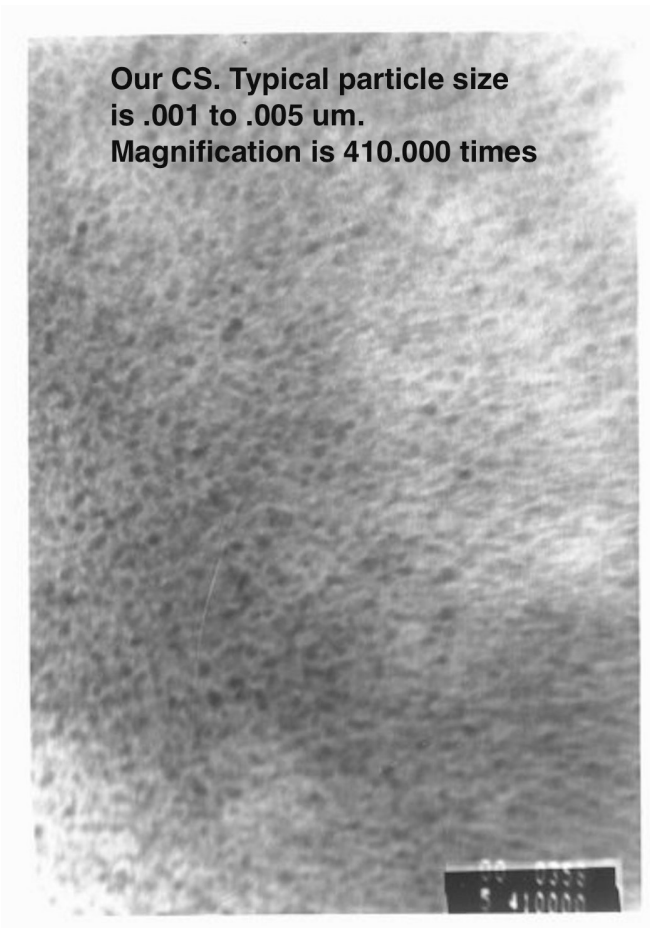


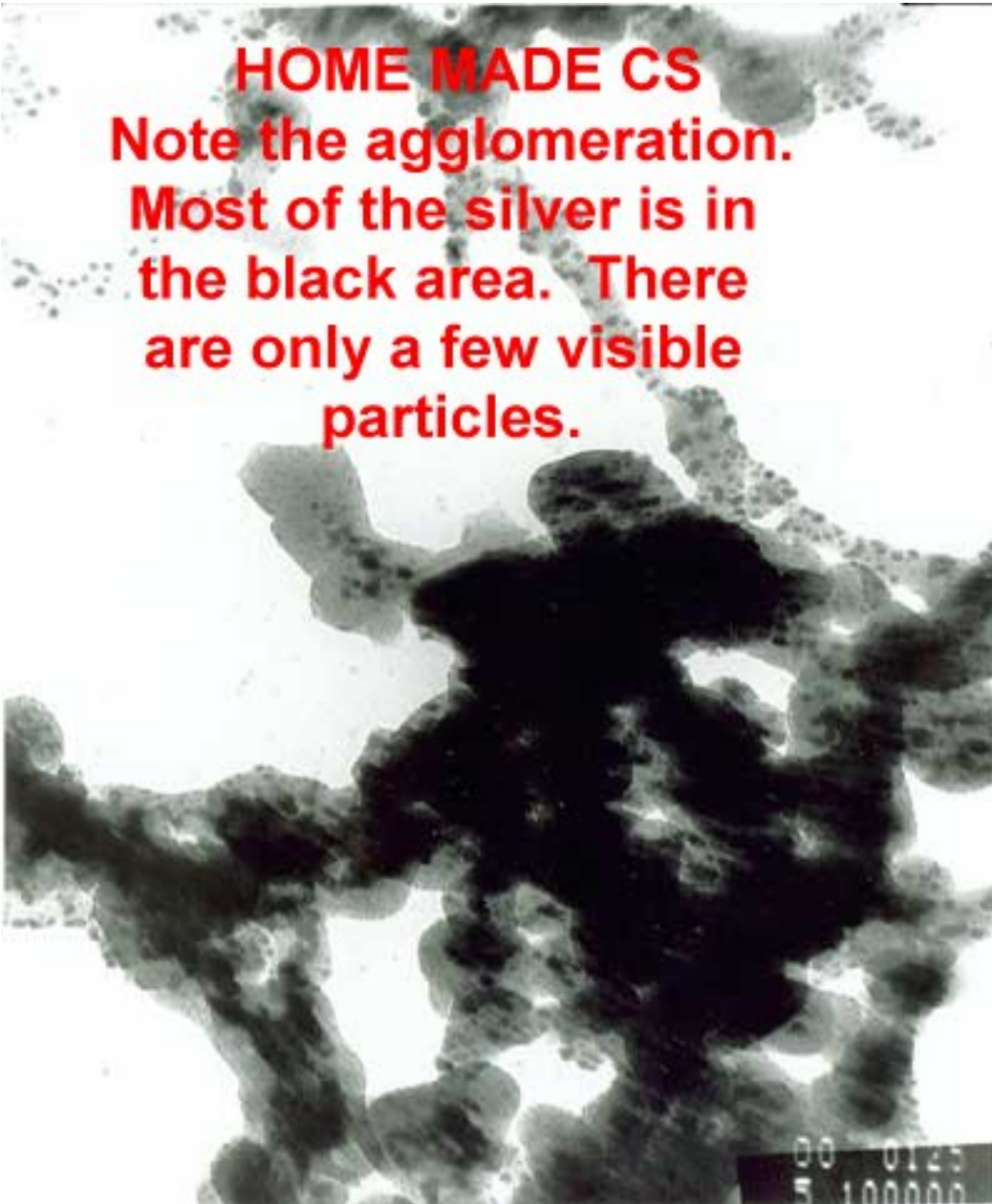
This transmission electron microscope photo of our CS The typical particle size is in the range of .001 to .005 μm . Magnification is 410,000 times. Notice the uniformity of particle shapes. Also note the particles are separate rather than agglomerated. This product is very uniform in particle size.

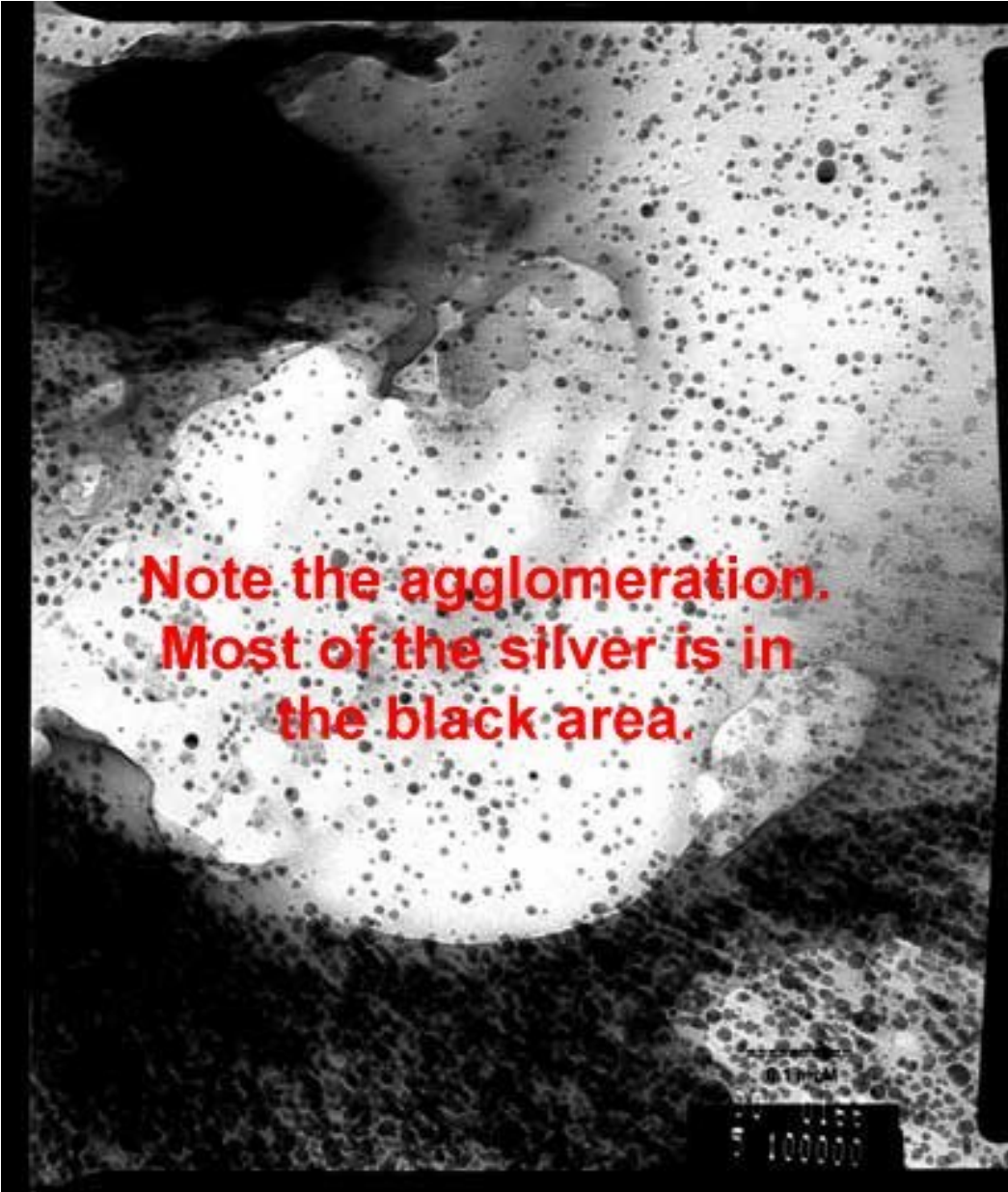
NOTE: See the thumbnail photos in the red box at the bottom of this page to see poorly made colloidal silver.



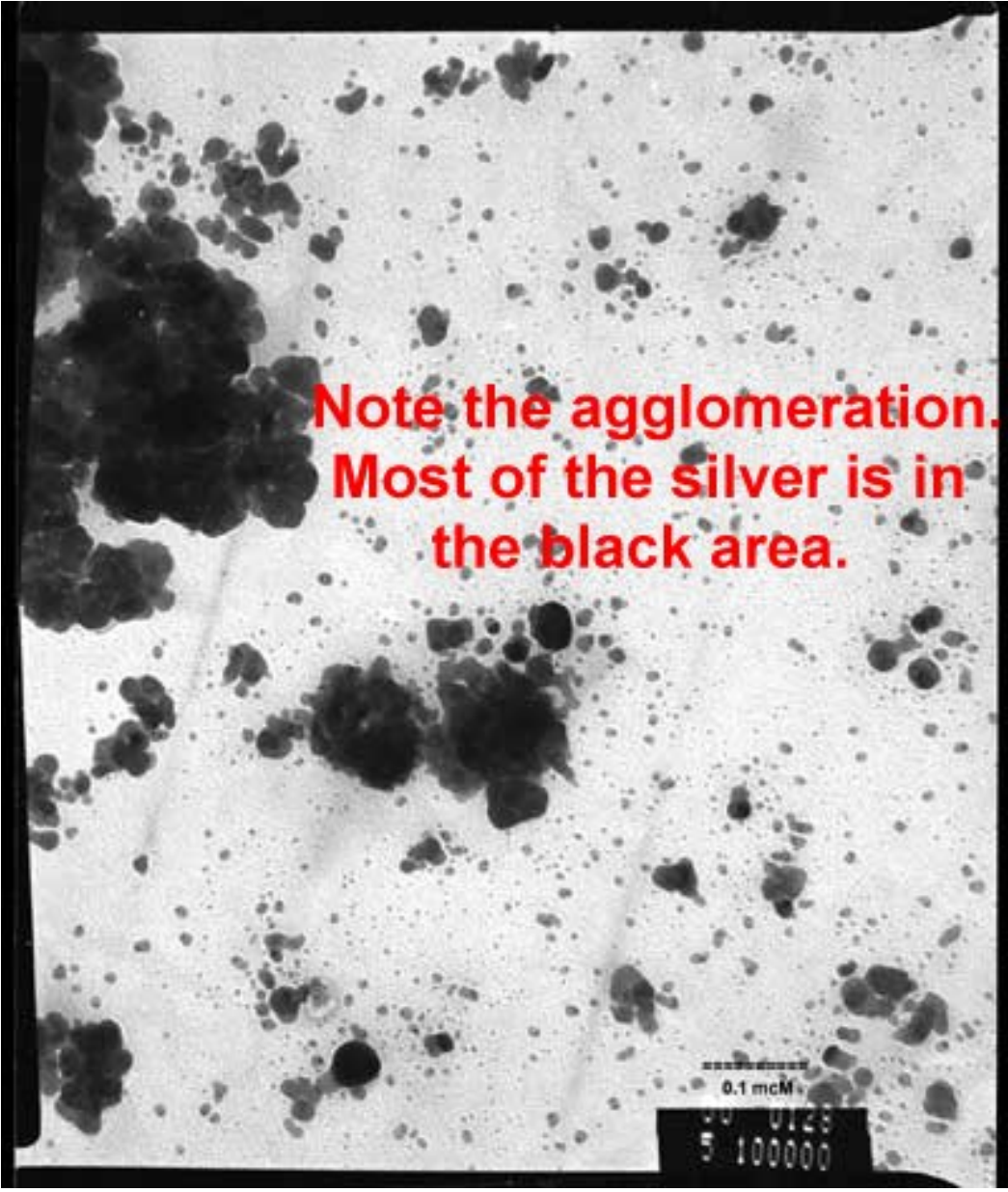
To see enlarged photos of poorly made CS of some vendors and a sample of home made colloidal silver, click on the thumbnail photos to enlarge. These transmission electron microscope photos were made at 100,000 power magnification.

HOME MADE CS
Note the agglomeration.
Most of the silver is in
the black area. There
are only a few visible
particles.





**Note the agglomeration.
Most of the silver is in
the black area.**



**Note the agglomeration.
Most of the silver is in
the black area.**